

\$415,000 - 53524 Rge Road 15, Rural Lac Ste. Anne County

MLS® #E4455539

\$415,000

3 Bedroom, 1.00 Bathroom, 1,126 sqft

Rural on 1.00 Acres

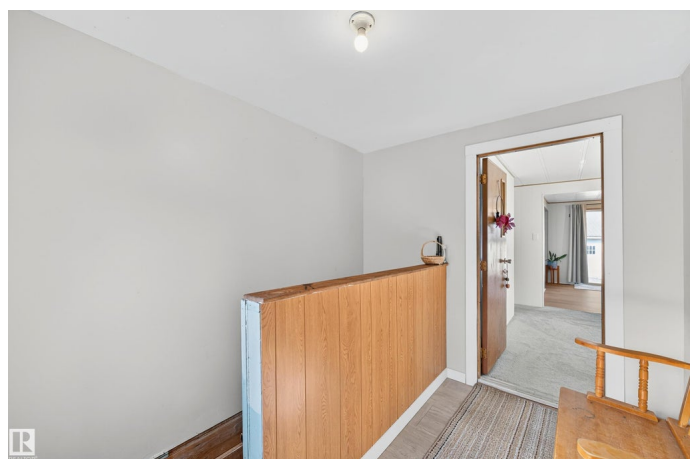
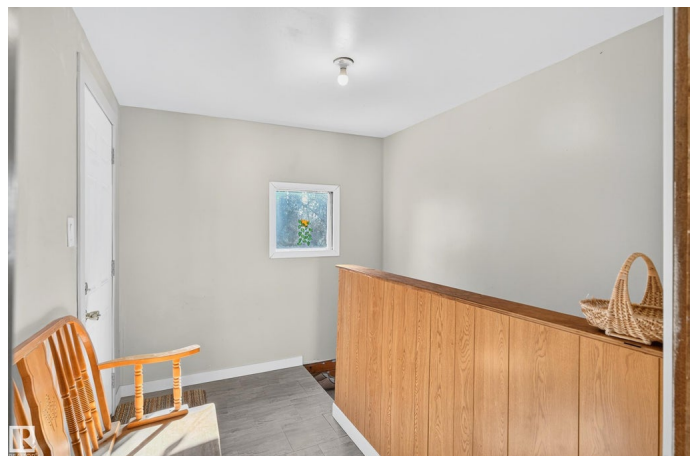
None, Rural Lac Ste. Anne County, AB

Escape to this perfect family 1 acre retreat in rural Lac Ste. Anne just minutes from the trails and lakes at Chickakoo Lake Recreation Area. This charming 3-bedroom bungalow is the perfect place to raise a family and enjoy the peace of country living. The thoughtful layout includes the convenience of main floor laundry, making daily routines simple and stress-free. The property is surrounded by mature trees, creating a peaceful, secluded setting while still being close to amenities. A triple garage plus a spacious shop provide plenty of room for vehicles, projects, and RV storage. The property is surrounded by nature, providing a peaceful and serene setting with space for kids to play and explore, a vegetable garden, room to grow and space to enjoy gatherings, barbecues, all while creating family traditions. This home is more than a place to live—it's a lifestyle of comfort, nature, and lasting memories.

Built in 1976

Essential Information

MLS® #	E4455539
Price	\$415,000
Bedrooms	3
Bathrooms	1.00



Full Baths	1
Square Footage	1,126
Acres	1.00
Year Built	1976
Type	Rural
Sub-Type	Detached Single Family
Style	Bungalow
Status	Active

Community Information

Address	53524 Rge Road 15
Area	Rural Lac Ste. Anne County
Subdivision	None
City	Rural Lac Ste. Anne County
County	ALBERTA
Province	AB
Postal Code	T0E 1V0

Amenities

Features	Detectors Smoke, Parking-Extra, R.V. Storage
----------	--

Interior

Heating	Forced Air-1, Natural Gas
Stories	1
Has Basement	Yes
Basement	Full, Partially Finished

Exterior

Exterior	Modular
Exterior Features	Backs Onto Park/Trees, Fenced, Flat Site, Landscaped, Level Land, Paved Lane, Private Setting, Treed Lot, Vegetable Garden
Construction	Modular
Foundation	Concrete Perimeter, Preserved Wood, See Remarks

Additional Information

Date Listed	September 1st, 2025
Days on Market	11
Zoning	Zone 70

DATA IS DEEMED RELIABLE BUT IS NOT GUARANTEED ACCURATE BY THE REALTORS® ASSOCIATION OF

EDMONTON. COPYRIGHT 2025 BY THE REALTORS® ASSOCIATION OF EDMONTON. ALL RIGHTS RESERVED.Trademarks are owned or controlled by the Canadian Real Estate Association (CREA) and identify real estate professionals who are members of CREA (REALTOR®, REALTORS®) and/or the quality of services they provide (MLS®, Multiple Listing Service®)

Listing information last updated on September 12th, 2025 at 2:47am MDT