

\$204,900 - 112 2035 Grantham Court, Edmonton

MLS® #E4443429

\$204,900

2 Bedroom, 1.00 Bathroom, 800 sqft

Condo / Townhouse on 0.00 Acres

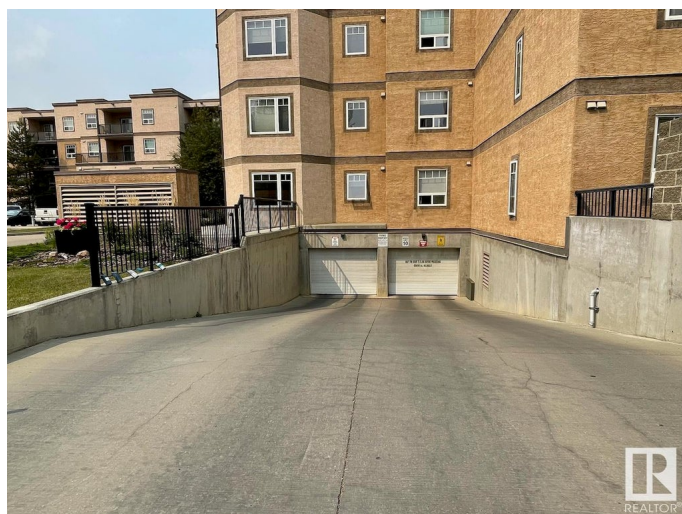
Glastonbury, Edmonton, AB

This two bedroom condo is a perfect first home or investment in popular Glastonbury! Enjoy central air conditioning, in-suite storage & laundry hook-ups, and underground titled parking. This property has a spacious kitchen with a tile backsplash and breakfast bar, perfect for entertaining. The dining nook adjoins the bright living room with gas fireplace. Easy access to your large private patio with gas BBQ hook-up. The primary bedroom is ensuite to the main 4pc. bathroom and has a double sided walk-through closet. The second bedroom is ideal for guests or a perfect home office. Close to shopping, transit, parks, and all other amenities. A quick closing is available.

Built in 2008

Essential Information

MLS® #	E4443429
Price	\$204,900
Bedrooms	2
Bathrooms	1.00
Full Baths	1
Square Footage	800
Acres	0.00
Year Built	2008
Type	Condo / Townhouse



Sub-Type	Lowrise Apartment
Style	Single Level Apartment
Status	Active

Community Information

Address	112 2035 Grantham Court
Area	Edmonton
Subdivision	Glastonbury
City	Edmonton
County	ALBERTA
Province	AB
Postal Code	T5T 3X4

Amenities

Amenities	Car Wash, Ceiling 9 ft., Detectors Smoke, Guest Suite, Parking-Plug-Ins, Parking-Visitor, Patio, Social Rooms, Storage-In-Suite
Parking Spaces	1
Parking	Underground

Interior

Interior Features	ensuite bathroom
Appliances	See Remarks
Heating	In Floor Heat System, Natural Gas
Fireplace	Yes
Fireplaces	Corner
# of Stories	4
Stories	1
Has Basement	Yes
Basement	None, No Basement

Exterior

Exterior	Wood, Stucco
Exterior Features	Golf Nearby, Landscaped, Public Transportation, Schools, Shopping Nearby
Roof	Tar & Gravel
Construction	Wood, Stucco
Foundation	Concrete Perimeter

Additional Information

Date Listed	June 19th, 2025
Days on Market	5
Zoning	Zone 58
RE / Bank Owned	Yes
Condo Fee	\$474

DATA IS DEEMED RELIABLE BUT IS NOT GUARANTEED ACCURATE BY THE REALTORS® ASSOCIATION OF EDMONTON. COPYRIGHT 2025 BY THE REALTORS® ASSOCIATION OF EDMONTON. ALL RIGHTS RESERVED. Trademarks are owned or controlled by the Canadian Real Estate Association (CREA) and identify real estate professionals who are members of CREA (REALTOR®, REALTORS®) and/or the quality of services they provide (MLS®, Multiple Listing Service®)

Listing information last updated on June 24th, 2025 at 7:17pm MDT