

## \$405,000 - 8129 7 Avenue, Edmonton

MLS® #E4442572

**\$405,000**

3 Bedroom, 1.50 Bathroom, 1,145 sqft

Single Family on 0.00 Acres

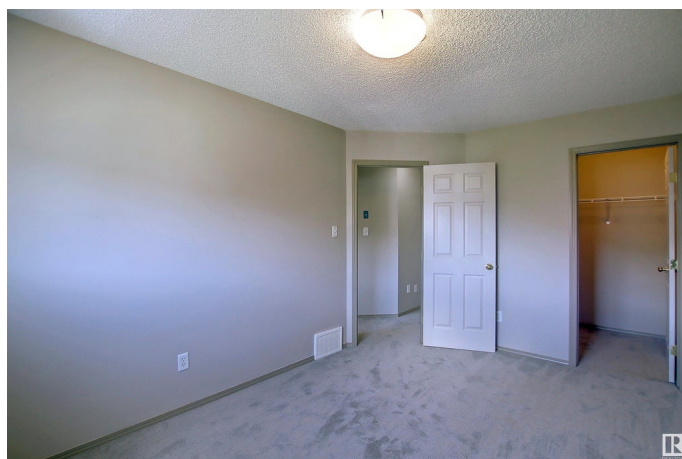
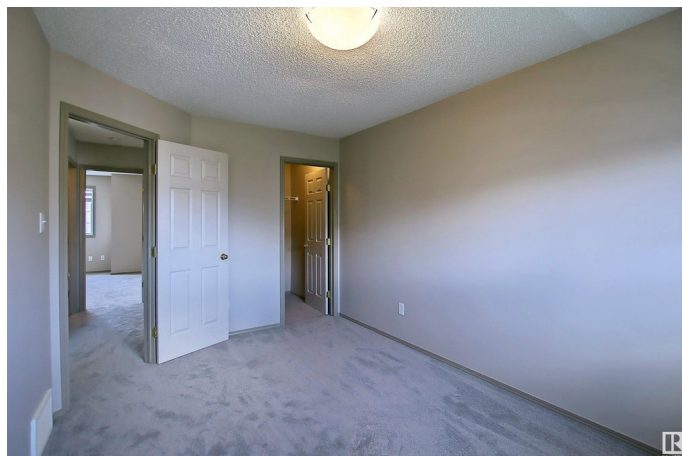
Ellerslie, Edmonton, AB

Don't miss out on this amazing property at a great location and with a big open front! Single family half-duplex home with an oversized double garage, big driveway with four car or RV parking space, features 3 bedrooms and a cozy corner fireplace. Recent upgrades include new carpet, new window covering, new paint, maintenance free landing and deck. Unfinished basement waiting for your final touches. Very close to bus route for Century Park and big park/playground and close to all amenities including schools, public transportation, parks, shopping, restaurants, and ANTHONY HENDAY.

Built in 2005

### Essential Information

|                |               |
|----------------|---------------|
| MLS® #         | E4442572      |
| Price          | \$405,000     |
| Bedrooms       | 3             |
| Bathrooms      | 1.50          |
| Full Baths     | 1             |
| Half Baths     | 1             |
| Square Footage | 1,145         |
| Acres          | 0.00          |
| Year Built     | 2005          |
| Type           | Single Family |
| Sub-Type       | Half Duplex   |



|        |          |
|--------|----------|
| Style  | 2 Storey |
| Status | Active   |

### Community Information

|             |               |
|-------------|---------------|
| Address     | 8129 7 Avenue |
| Area        | Edmonton      |
| Subdivision | Ellerslie     |
| City        | Edmonton      |
| County      | ALBERTA       |
| Province    | AB            |
| Postal Code | T6X 1L9       |

### Amenities

|                |                                    |
|----------------|------------------------------------|
| Amenities      | Deck, Hot Water Natural Gas        |
| Parking Spaces | 6                                  |
| Parking        | Double Garage Attached, RV Parking |

### Interior

|              |   |
|--------------|---|
| Appliances   | Dishwasher-Built-In, Dryer, Garage Control, Garage Opener, Microwave Hood Fan, Refrigerator, Stove-Electric, Washer |
| Heating      | See Remarks, Natural Gas  |
| Fireplace    | Yes   |
| Fireplaces   | Corner, Tile Surround   |
| Stories      | 2   |
| Has Basement | Yes   |
| Basement     | Full, Unfinished  |

### Exterior

|                   |  |
|-------------------|--|
| Exterior          | Wood, Asphalt, Vinyl   |
| Exterior Features | Backs Onto Park/Trees, Fenced, Park/Reserve, Playground Nearby, Public Transportation, Schools |
| Roof              | Asphalt Shingles   |
| Construction      | Wood, Asphalt, Vinyl   |
| Foundation        | Concrete Perimeter   |

### Additional Information

|                |                 |
|----------------|-----------------|
| Date Listed    | June 15th, 2025 |
| Days on Market | 14              |
| Zoning         | Zone 53         |

DATA IS DEEMED RELIABLE BUT IS NOT GUARANTEED ACCURATE BY THE REALTORS® ASSOCIATION OF EDMONTON. COPYRIGHT 2025 BY THE REALTORS® ASSOCIATION OF EDMONTON. ALL RIGHTS RESERVED.Trademarks are owned or controlled by the Canadian Real Estate Association (CREA) and identify real estate professionals who are members of CREA (REALTOR®, REALTORS®) and/or the quality of services they provide (MLS®, Multiple Listing Service®)

Listing information last updated on June 29th, 2025 at 12:47pm MDT