

# \$1,239,000 - 103 William Bell Drive, Leduc

MLS® #E4441325

**\$1,239,000**

7 Bedroom, 5.00 Bathroom, 3,567 sqft

Single Family on 0.00 Acres

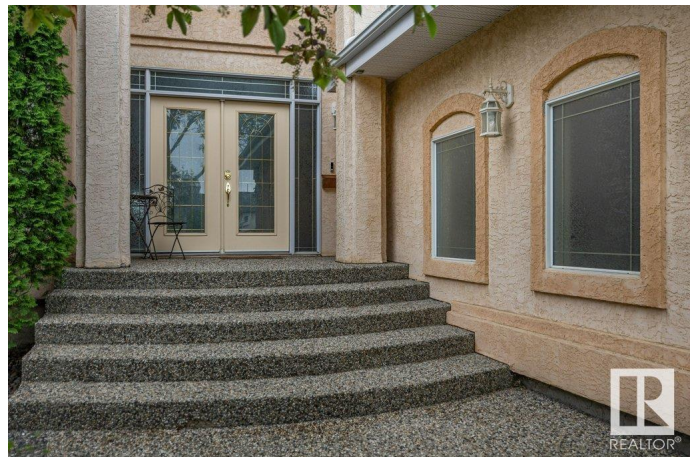
Lakeside Estates (Leduc), Leduc, AB

A ONE OF A KIND PROPERTY ! Situated on Westpoint Lake this home has a walkout basement that is totally developed. This is a custom built home with so many features its a gotta see to appreciate. The home has 7 bedrooms and 5 baths. Huge front foyer with a very impressive curved open staircase. Living room , formal dining room, a chefs kitchen with 2 built in ovens, double fridges with freezers, induction countertop stove, compacter, granite counters and backsplash. A large dinette and family room. Access to deck with gas hook up. Main floor bedroom or den and a 3 piece bath as well as a separate laundry. Upstairs features 4 bedrooms and 3 bathrooms. The garage is over sized at 25 X25. Located in a family friendly cul-de-sac. And the property is in mint condition. Upgrades throughout.

Built in 1997

## Essential Information

MLS® #	E4441325
Price	\$1,239,000
Bedrooms	7
Bathrooms	5.00
Full Baths	5
Square Footage	3,567
Acres	0.00
Year Built	1997



Type	Single Family
Sub-Type	Detached Single Family
Style	2 Storey
Status	Active

### **Community Information**

Address	103 William Bell Drive
Area	Leduc
Subdivision	Lakeside Estates (Leduc)
City	Leduc
County	ALBERTA
Province	AB
Postal Code	T9E 6P8

### **Amenities**

Amenities	Air Conditioner, Ceiling 10 ft., Closet Organizers, Deck, Detectors Smoke, Fire Pit, No Animal Home, No Smoking Home, Walkout Basement, Natural Gas BBQ Hookup
Parking	Double Garage Attached, Over Sized

### **Interior**

Interior Features	ensuite bathroom
Appliances	Air Conditioning-Central, Dishwasher-Built-In, Dryer, Garage Opener, Microwave Hood Fan, Vacuum System Attachments, Washer, Oven Built-In-Two, Stove-Induction, Garage Heater
Heating	Forced Air-2, In Floor Heat System, Natural Gas
Stories	3
Has Basement	Yes
Basement	See Remarks

### **Exterior**

Exterior	Wood, Stucco
Exterior Features	Cul-De-Sac, Fruit Trees/Shrubs, Golf Nearby, Lake Access Property, Landscaped, Waterfront Property
Roof	Asphalt Shingles
Construction	Wood, Stucco
Foundation	Concrete Perimeter

### **Additional Information**

Date Listed	June 6th, 2025
-------------	----------------

Days on Market 20

Zoning Zone 81

DATA IS DEEMED RELIABLE BUT IS NOT GUARANTEED ACCURATE BY THE REALTORS® ASSOCIATION OF EDMONTON. COPYRIGHT 2025 BY THE REALTORS® ASSOCIATION OF EDMONTON. ALL RIGHTS RESERVED. Trademarks are owned or controlled by the Canadian Real Estate Association (CREA) and identify real estate professionals who are members of CREA (REALTOR®, REALTORS®) and/or the quality of services they provide (MLS®, Multiple Listing Service®)

Listing information last updated on June 26th, 2025 at 4:32am MDT