

\$247,900 - N/A, Edmonton

MLS® #E4441147

\$247,900

2 Bedroom, 2.00 Bathroom, 860 sqft
Condo / Townhouse on 0.00 Acres

Summerside, Edmonton, AB

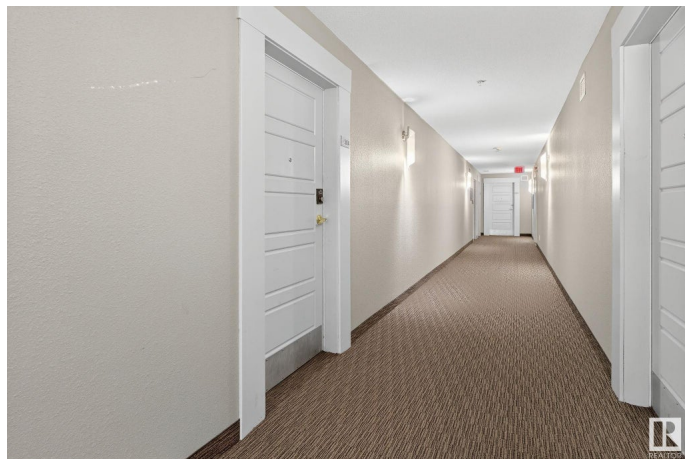
2-Bed, 2-Bath Condo in Lake Summerside with Private Lake Access for Residents ONLY.

Located in the highly desirable Summerside Community, this bright and spacious 3rd-floor condo offers the perfect balance of comfort, style, and convenience. Featuring 2 bedrooms, 2 bathrooms, a spacious living room with natural light pouring in through, the kitchen with breakfast bar making it easy to prepare meals and a private balcony, this unit is ideal for those looking to live in a modern and vibrant neighborhood. This condo combines modern living with unbeatable amenities, all within one of the best communities in the area. Don't miss out - make this gem your new home!

Built in 2012

Essential Information

MLS® #	E4441147
Price	\$247,900
Bedrooms	2
Bathrooms	2.00
Full Baths	2
Square Footage	860
Acres	0.00
Year Built	2012
Type	Condo / Townhouse



Sub-Type	Lowrise Apartment
Style	Single Level Apartment
Status	Active

Community Information

Address	N/A
Area	Edmonton
Subdivision	Summerside
City	Edmonton
County	ALBERTA
Province	AB
Postal Code	T6X 0Z4

Amenities

Amenities	Exercise Room, Guest Suite, Lake Privileges, Parking-Visitor, Recreation Room/Centre, Social Rooms
Parking	Heated, Stall, Underground

Interior

Interior Features	ensuite bathroom
Appliances	Dishwasher-Built-In, Dryer, Microwave Hood Fan, Refrigerator, Stove-Electric, Washer, Window Coverings
Heating	Hot Water, Natural Gas
# of Stories	4
Stories	1
Has Basement	Yes
Basement	None, No Basement

Exterior

Exterior	Wood, Vinyl
Exterior Features	Landscaped, Park/Reserve, Picnic Area, Playground Nearby, Public Transportation, Schools, Shopping Nearby
Roof	Asphalt Shingles
Construction	Wood, Vinyl
Foundation	Concrete Perimeter

Additional Information

Date Listed	June 7th, 2025
Days on Market	15
Zoning	Zone 53

HOA Fees	390
HOA Fees Freq.	Annually
Condo Fee	\$495

DATA IS DEEMED RELIABLE BUT IS NOT GUARANTEED ACCURATE BY THE REALTORS® ASSOCIATION OF EDMONTON. COPYRIGHT 2025 BY THE REALTORS® ASSOCIATION OF EDMONTON. ALL RIGHTS RESERVED. Trademarks are owned or controlled by the Canadian Real Estate Association (CREA) and identify real estate professionals who are members of CREA (REALTOR®, REALTORS®) and/or the quality of services they provide (MLS®, Multiple Listing Service®)

Listing information last updated on June 22nd, 2025 at 5:32am MDT