

## \$535,000 - 100 Napoleon Crescent, St. Albert

MLS® #E4434143

**\$535,000**

4 Bedroom, 3.00 Bathroom, 1,298 sqft

Single Family on 0.00 Acres

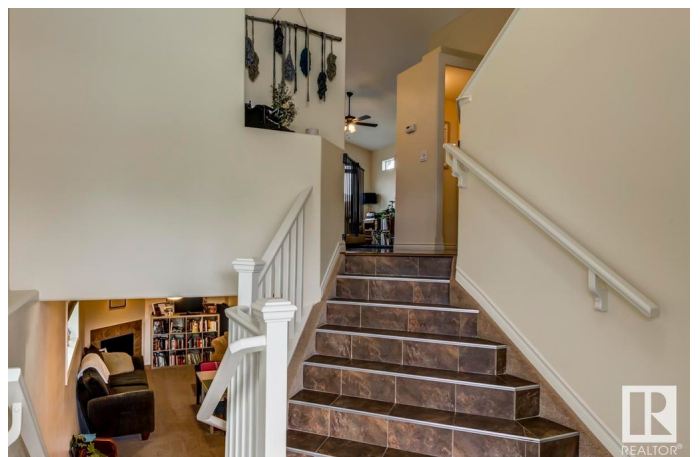
North Ridge, St. Albert, AB

Welcome to this beautiful bi-level situated ideally in the family community of North Ridge. Very inviting open floor plan showcasing maple hardwood flooring and ceramic tile. Big bright windows and a vaulted ceiling. Gorgeous kitchen with centre island / breakfast bar, stainless appliances, and corner pantry. Patio doors to a raised deck overlooking the fully fenced and landscaped yard. Main floor has a bedroom and adjacent 4 piece bath. Primary bedroom is above the garage and has a walk-in closet and 4 piece ensuite. Lower level has a generous family room with cozy corner gas fireplace. 2 additional bedrooms and another 4 piece bath. Meticulously maintained yard great for entertaining. Conveniently located with trails to parks and pond. Easy access to Ray Gibbon Drive and Henday.

Built in 2008

### Essential Information

MLS® #	E4434143
Price	\$535,000
Bedrooms	4
Bathrooms	3.00
Full Baths	3
Square Footage	1,298
Acres	0.00



Year Built	2008
Type	Single Family
Sub-Type	Detached Single Family
Style	Bi-Level
Status	Active

### **Community Information**

Address	100 Napoleon Crescent
Area	St. Albert
Subdivision	North Ridge
City	St. Albert
County	ALBERTA
Province	AB
Postal Code	T8N 3L6

### **Amenities**

Amenities	Deck, Detectors Smoke, Vaulted Ceiling
Parking Spaces	2
Parking	Double Garage Attached

### **Interior**

Interior Features	ensuite bathroom
Appliances	Dishwasher-Built-In, Dryer, Garage Opener, Humidifier-Power(Furnace), Microwave Hood Fan, Refrigerator, Stove-Electric, Vacuum Systems, Washer, Window Coverings
Heating	Forced Air-1, Natural Gas
Fireplace	Yes
Fireplaces	Corner
Stories	2
Has Basement	Yes
Basement	Full, Finished

### **Exterior**

Exterior	Wood, Brick, Vinyl
Exterior Features	Fenced, Flat Site, Landscaped, Playground Nearby, Schools, Shopping Nearby
Roof	Asphalt Shingles
Construction	Wood, Brick, Vinyl
Foundation	Concrete Perimeter

**Additional Information**

Date Listed            May 2nd, 2025  
Days on Market       3  
Zoning                 Zone 24

DATA IS DEEMED RELIABLE BUT IS NOT GUARANTEED ACCURATE BY THE REALTORS® ASSOCIATION OF EDMONTON. COPYRIGHT 2025 BY THE REALTORS® ASSOCIATION OF EDMONTON. ALL RIGHTS RESERVED.Trademarks are owned or controlled by the Canadian Real Estate Association (CREA) and identify real estate professionals who are members of CREA (REALTOR®, REALTORS®) and/or the quality of services they provide (MLS®, Multiple Listing Service®)  
Listing information last updated on May 5th, 2025 at 2:32pm MDT