

\$719,900 - 19 Edwin Crescent, St. Albert

MLS® #E4434061

\$719,900

5 Bedroom, 3.50 Bathroom, 2,657 sqft

Single Family on 0.00 Acres

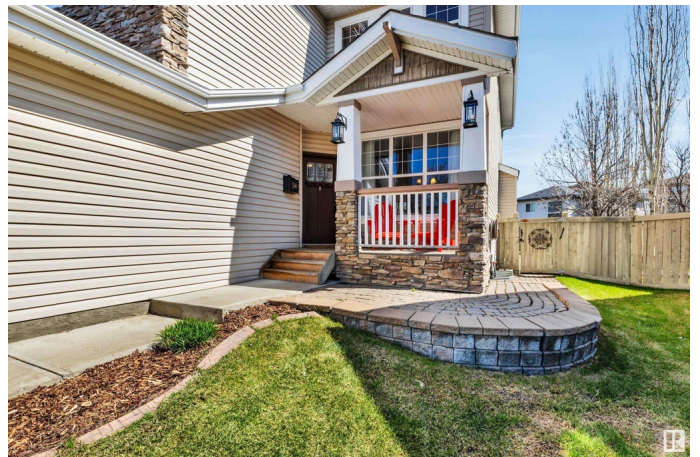
Erin Ridge, St. Albert, AB

Fantastic location for this 2656 sq. ft. 2 storey located on a large pie lot in a quiet Erin Ridge cul-de-sac! Great space for the growing family. The main floor features 9' ceilings, a huge maple kitchen with newer stainless steel appliances, large center island and corner pantry. A spacious dining nook with big windows let the sun pour in! A living room with gas fireplace, dining room and den with beautiful built-ins complete the main floor. There are 4 bedrooms upstairs including a massive primary with large windows, updated 5 piece ensuite with jetted tub and shower and walk-in closet. A bonus/family room provides great space for the family. The basement is finished with a 5th bedroom, 4 piece bath and large rec room plus storage space. Enjoy the large, east facing backyard this summer! Recent upgrades incl. shingles (2020), Furnace (2023), HWT (2025) and central A/C (2022).

Built in 2003

Essential Information

MLS® #	E4434061
Price	\$719,900
Bedrooms	5
Bathrooms	3.50
Full Baths	3



Half Baths	1
Square Footage	2,657
Acres	0.00
Year Built	2003
Type	Single Family
Sub-Type	Detached Single Family
Style	2 Storey
Status	Active

Community Information

Address	19 Edwin Crescent
Area	St. Albert
Subdivision	Erin Ridge
City	St. Albert
County	ALBERTA
Province	AB
Postal Code	T8N 7G9

Amenities

Amenities	Air Conditioner, Deck, No Smoking Home, Patio, Vinyl Windows
Parking	Double Garage Attached

Interior

Interior Features	ensuite bathroom
Appliances	Air Conditioning-Central, Alarm/Security System, Dryer, Microwave Hood Fan, Refrigerator, Storage Shed, Stove-Electric, Vacuum System Attachments, Vacuum Systems, Washer, Window Coverings, See Remarks
Heating	Forced Air-1, Natural Gas
Fireplace	Yes
Fireplaces	Mantel
Stories	3
Has Basement	Yes
Basement	Full, Finished

Exterior

Exterior	Wood, Stone, Vinyl
Exterior Features	Cul-De-Sac, Fenced, Golf Nearby, Landscaped, No Back Lane, Playground Nearby, Public Transportation, Schools, Shopping Nearby

Roof	Asphalt Shingles
Construction	Wood, Stone, Vinyl
Foundation	Concrete Perimeter

Additional Information

Date Listed	May 2nd, 2025
Days on Market	6
Zoning	Zone 24

DATA IS DEEMED RELIABLE BUT IS NOT GUARANTEED ACCURATE BY THE REALTORS® ASSOCIATION OF EDMONTON. COPYRIGHT 2025 BY THE REALTORS® ASSOCIATION OF EDMONTON. ALL RIGHTS RESERVED.Trademarks are owned or controlled by the Canadian Real Estate Association (CREA) and identify real estate professionals who are members of CREA (REALTOR®, REALTORS®) and/or the quality of services they provide (MLS®, Multiple Listing Service®)

Listing information last updated on May 8th, 2025 at 1:32am MDT