

\$720,000 - 667 King Street, Spruce Grove

MLS® #E4431429

\$720,000

3 Bedroom, 2.50 Bathroom, 2,390 sqft

Single Family on 0.00 Acres

Hilldowns, Spruce Grove, AB

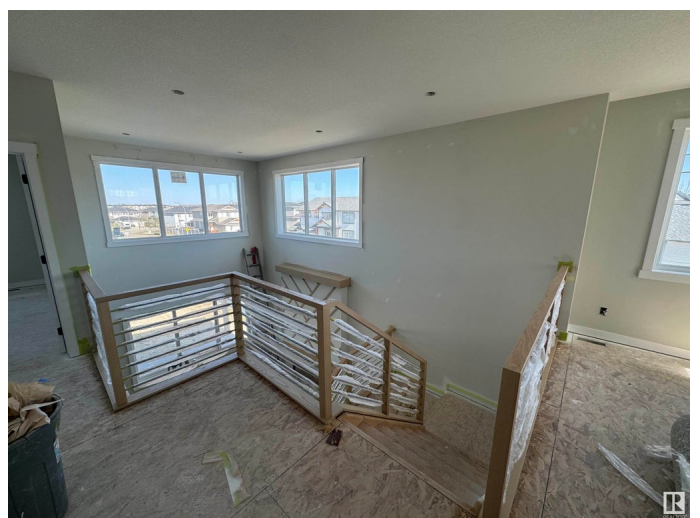
BRAND NEW! Craftsman Home by LCM Construction located in the Hilldowns neighborhood, Spruce Grove! This corner lot, 2 story home offers exceptional curb appeal w/olive vinyl exterior, white window & door trim, tan triple garage doors, with complimentary stone on the front. Main Floor boasts a modern floorplan w/9ft ceilings, vinyl plank flooring, flex/office room, mudroom w/built in bench, 20ft open to below living room w/ feature wall/fireplace, large kitchen w/4ft wide quartz island, walkthrough pantry, SS appliances & modern black fixtures & hardware. Upstairs offers an open bonus room, carpet flooring, laundry room w/quartz countertop, 2 large bedrooms & a spacious primary bedroom w/5 piece ensuite, modern soaker tub, tiled shower, enclosed toilet & walk-in closet. Enjoy entertaining in the spacious backyard w/a covered deck featuring plank style vinyl flooring. Bonus, AC unit, Side door entry, 125 amp electrical service, 9ft ceiling on all floors, w/ 12ft ceiling in garage. Move in ready end of May.

Built in 2024

Essential Information

MLS® # E4431429

Price \$720,000



Bedrooms	3
Bathrooms	2.50
Full Baths	2
Half Baths	1
Square Footage	2,390
Acres	0.00
Year Built	2024
Type	Single Family
Sub-Type	Detached Single Family
Style	2 Storey
Status	Active

Community Information

Address	667 King Street
Area	Spruce Grove
Subdivision	Hilldowns
City	Spruce Grove
County	ALBERTA
Province	AB
Postal Code	T7X 4P7

Amenities

Amenities	Carbon Monoxide Detectors, Ceiling 9 ft., Deck, Detectors Smoke, 9 ft. Basement Ceiling
Parking	Triple Garage Attached

Interior

Appliances	Air Conditioning-Central, Dishwasher-Built-In, Dryer, Garage Control, Garage Opener, Microwave Hood Fan, Refrigerator, Stove-Electric, Washer, Garage Heater
Heating	Forced Air-1, Natural Gas
Fireplace	Yes
Fireplaces	Mantel
Stories	2
Has Basement	Yes
Basement	Full, Unfinished

Exterior

Exterior	Wood, Stone, Vinyl
----------	--------------------

Exterior Features	Picnic Area, Playground Nearby, Public Swimming Pool, Public Transportation, Rolling Land, Schools, Shopping Nearby, Stream/Pond
Roof	Asphalt Shingles
Construction	Wood, Stone, Vinyl
Foundation	Concrete Perimeter

Additional Information

Date Listed	April 17th, 2025
Days on Market	20
Zoning	Zone 91

DATA IS DEEMED RELIABLE BUT IS NOT GUARANTEED ACCURATE BY THE REALTORS® ASSOCIATION OF EDMONTON. COPYRIGHT 2025 BY THE REALTORS® ASSOCIATION OF EDMONTON. ALL RIGHTS RESERVED.Trademarks are owned or controlled by the Canadian Real Estate Association (CREA) and identify real estate professionals who are members of CREA (REALTOR®, REALTORS®) and/or the quality of services they provide (MLS®, Multiple Listing Service®)

Listing information last updated on May 7th, 2025 at 2:47pm MDT