

\$209,900 - 416 5521 7 Avenue, Edmonton

MLS® #E4430802

\$209,900

2 Bedroom, 2.00 Bathroom, 689 sqft

Condo / Townhouse on 0.00 Acres

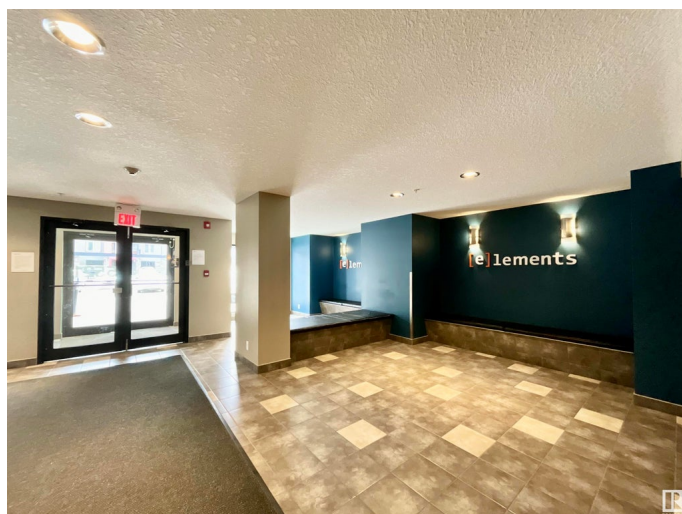
Charlesworth, Edmonton, AB

Attention all first-time home buyers or those looking for an investment! Perched on the TOP FLOOR of the Elements at Willowhaven, this immaculately maintained 2 bedroom, 2 bathroom condo offers sophisticated living in a prime location in the community of Charlesworth. The thoughtfully designed floor plan maximizes both space and natural light. The primary bedroom features a luxurious ENSUITE BATHROOM and walkthrough closet, creating the perfect retreat. A second bedroom and 3 piece bathroom provide ideal accommodations for guests or a home office. The bright, open-concept living area flows seamlessly to the kitchen, perfect for entertaining. Enjoy the convenience of IN-SUITE LAUNDRY and secure UNDERGROUND PARKING. UTILITIES INCLUDED IN CONDO FEE! Minutes from shopping, dining, and transit connections. This turn-key property combines location, luxury, and lifestyle. Your urban oasis awaits!

Built in 2014

Essential Information

MLS® #	E4430802
Price	\$209,900
Bedrooms	2
Bathrooms	2.00



Full Baths	2
Square Footage	689
Acres	0.00
Year Built	2014
Type	Condo / Townhouse
Sub-Type	Lowrise Apartment
Style	Single Level Apartment
Status	Active

Community Information

Address	416 5521 7 Avenue
Area	Edmonton
Subdivision	Charlesworth
City	Edmonton
County	ALBERTA
Province	AB
Postal Code	T6X 2A8

Amenities

Amenities	Off Street Parking, Detectors Smoke, No Smoking Home, Parking-Visitor, Secured Parking
Parking Spaces	1
Parking	Heated, Underground

Interior

Interior Features	ensuite bathroom
Appliances	Dishwasher-Built-In, Dryer, Microwave Hood Fan, Refrigerator, Stove-Electric, Washer, Window Coverings
Heating	Baseboard, Natural Gas
# of Stories	4
Stories	1
Has Basement	Yes
Basement	None, No Basement

Exterior

Exterior	Wood, Stone, Vinyl
Exterior Features	Golf Nearby, Playground Nearby, Schools, Shopping Nearby
Roof	Asphalt Shingles
Construction	Wood, Stone, Vinyl

Foundation Concrete Perimeter

Additional Information

Date Listed April 14th, 2025
Days on Market 22
Zoning Zone 53
Condo Fee \$403

DATA IS DEEMED RELIABLE BUT IS NOT GUARANTEED ACCURATE BY THE REALTORS® ASSOCIATION OF EDMONTON. COPYRIGHT 2025 BY THE REALTORS® ASSOCIATION OF EDMONTON. ALL RIGHTS RESERVED.Trademarks are owned or controlled by the Canadian Real Estate Association (CREA) and identify real estate professionals who are members of CREA (REALTOR®, REALTORS®) and/or the quality of services they provide (MLS®, Multiple Listing Service®)
Listing information last updated on May 6th, 2025 at 4:17am MDT