

\$599,500 - 4916 50 Avenue, Rural Lac Ste. Anne County

MLS® #E4420914

\$599,500

3 Bedroom, 2.00 Bathroom, 1,735 sqft

Rural on 0.00 Acres

Alberta Beach, Rural Lac Ste. Anne County,
AB

Whisper Creek Log Home set on Beachfront Property. Unique 2x6 construction with real Whisper Creek Log finishing on the exterior recently refinished. Feature log wall overlooking the lake, large Timber log finishing the interior. Open floor plan with cathedral ceilings, cozy fireplace in the Livingroom, open to the gourmet style kitchen with centre island, quartz countertops, Sub Zero refrigerator and Viking 6 burner gas stove with convection oven. Energy efficient home with upgraded insulation and heated flooring throughout. 20"X20" porcelain tile flooring that holds the heat in the winter and keeps you cool in the summer. Steam Shower on main floor and aerator tub upstairs. Two spacious bedrooms on the main floor and a large master bedroom upstairs with ensuite and private balcony. Sunset views throughout the home through the wall of windows overlooking the lake or sit on the 12' covered, timber accented deck.

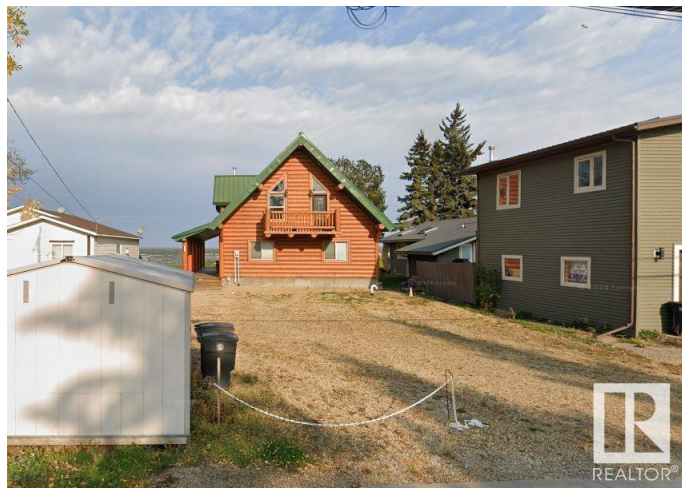
Built in 2008

Essential Information

MLS® # E4420914

Price \$599,500

Bedrooms 3



Bathrooms	2.00
Full Baths	2
Square Footage	1,735
Acres	0.00
Year Built	2008
Type	Rural
Sub-Type	Detached Single Family
Style	1 and Half Storey
Status	Active

Community Information

Address	4916 50 Avenue
Area	Rural Lac Ste. Anne County
Subdivision	Alberta Beach
City	Rural Lac Ste. Anne County
County	ALBERTA
Province	AB
Postal Code	T0E 0A0

Amenities

Features	Crawl Space, Deck
Parking Spaces	6

Interior

Interior Features	ensuite bathroom
Heating	In Floor Heat System, Natural Gas
Fireplace	Yes
Stories	2
Has Basement	Yes
Basement	None, No Basement

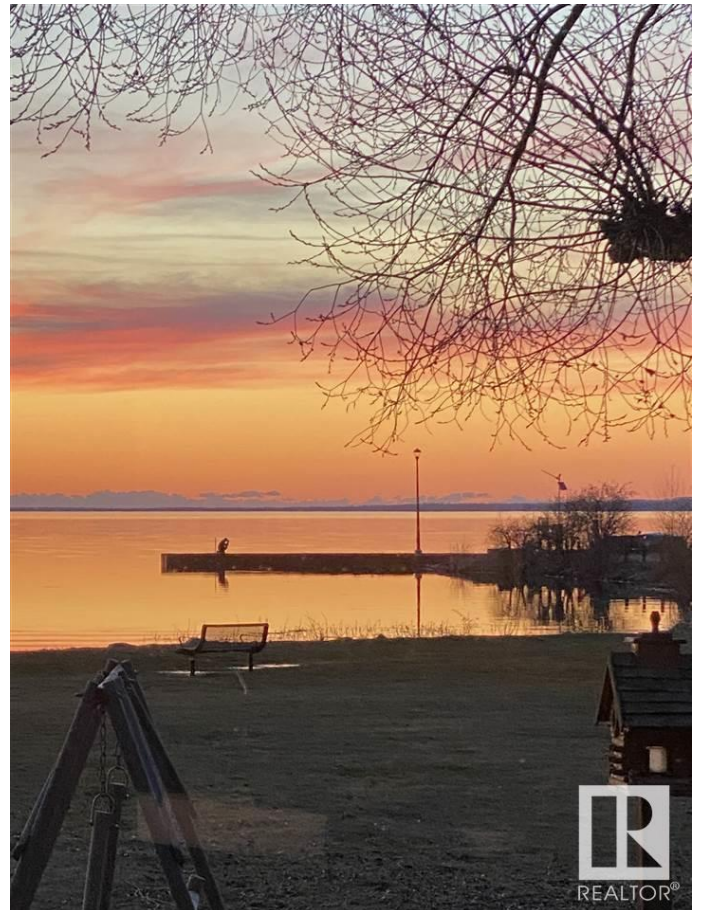
Exterior

Exterior	Wood
Exterior Features	Lake Access Property, Recreation Use, Waterfront Property
Construction	Wood
Foundation	Insulated Concrete Form

Additional Information

Date Listed	February 9th, 2025
-------------	--------------------

Days on Market 89
Zoning Zone 71



DATA IS DEEMED RELIABLE BUT IS NOT GUARANTEED ACCURATE BY THE REALTORS® ASSOCIATION OF EDMONTON. COPYRIGHT 2025 BY THE REALTORS® ASSOCIATION OF EDMONTON. ALL RIGHTS RESERVED. Trademarks are owned or controlled by the Canadian Real Estate Association (CREA) and identify real estate professionals who are members of CREA (REALTOR®, REALTORS®) and/or the quality of services they provide (MLS®, Multiple Listing Service®)

Listing information last updated on May 9th, 2025 at 2:47pm MDT