

\$79,900 - 9832 111 Street, Westlock

MLS® #E4367627

\$79,900

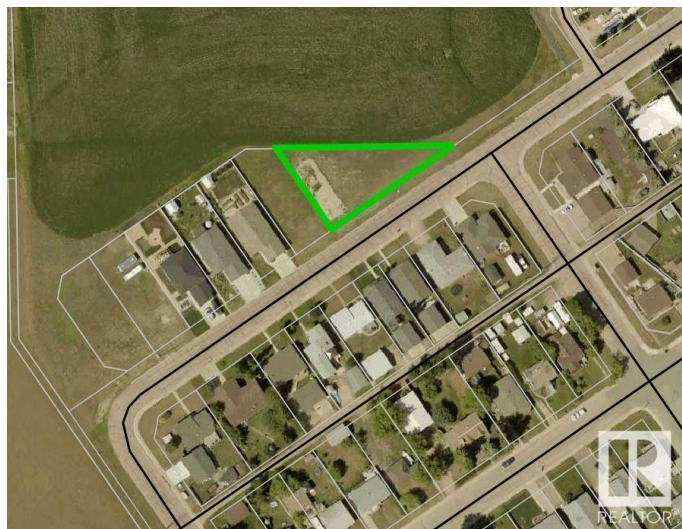
0 Bedroom, 0.00 Bathroom,
Single Family on 0.00 Acres

Westlock, Westlock, AB

Welcome to your canvas of possibilities! Nestled in the heart of Westlock, Alberta, this expansive vacant lot presents a rare opportunity for your dream project. Boasting an ample size and a unique pie-shaped layout, this parcel of land offers endless potential for your imagination to take flight. Already equipped with water, sewer, power, and high-speed fiber optics directly into the lot, ensuring ease and convenience for development. Positioned adjacent to serene greenspace, offering a peaceful backdrop. Close proximity to the picturesque Whisselville Pond and the inviting Rotary Walking Trails, ideal for leisurely strolls and enjoying the beauty of nature. Seize this rare opportunity to own a large, well-serviced vacant lot in Westlock, Alberta. With its prime location, abundant amenities, and utilities already in place, this property is a gateway to realizing your vision.

Essential Information

| | |
|-----------|-----------------|
| MLS® # | E4367627 |
| Price | \$79,900 |
| Bathrooms | 0.00 |
| Acres | 0.00 |
| Type | Single Family |
| Sub-Type | Vacant Lot/Land |



Status Active

Community Information

Address 9832 111 Street
Area Westlock
Subdivision Westlock
City Westlock
County ALBERTA
Province AB
Postal Code T7P 0C6

Exterior

Exterior Features Flat Site, Playground Nearby

Additional Information

Date Listed December 11th, 2023
Days on Market 512
Zoning Zone 70

DATA IS DEEMED RELIABLE BUT IS NOT GUARANTEED ACCURATE BY THE REALTORS® ASSOCIATION OF EDMONTON. COPYRIGHT 2025 BY THE REALTORS® ASSOCIATION OF EDMONTON. ALL RIGHTS RESERVED.Trademarks are owned or controlled by the Canadian Real Estate Association (CREA) and identify real estate professionals who are members of CREA (REALTOR®, REALTORS®) and/or the quality of services they provide (MLS®, Multiple Listing Service®)
Listing information last updated on May 6th, 2025 at 9:31am MDT